

## Mark Your Calendars

Come join us for Study & Worship Saturday mornings at 10 a.m., Prayer meetings on Wednesday at 7 p.m. and for the following.

Feb 24 Sat 5:31 PM Vespers & Social Night

Mar 3 Sat 11:00 AM Invite-a-Friend Sabbath

Mar 3 Sat 1:00 PM Fellowship Potluck (hosts: Children's Ministry/Sabbath School)

Mar 3 Sat 1:00 PM Deacons' Meeting (during potluck)

Mar 3 Sat 2:00 PM Sabbath School Council

Mar 17 Sat 11:00 AM Worship in Music: ProMusica

Mar 17 Sat 1:00 PM Fellowship Potluck (hosts: Deaconesses / Deacons)

Mar 18 Sun 8:00 AM Super Work Bee — Calling All Hands!!

Mar 20 Tue 7:00 PM Church Board Meeting

Mar 29 Thu Easter Food Baskets Preparation

Mar 31 Sat 11:00 AM Easter Music Program

Apr 7 Sat 11:00 AM Communion Sabbath

Apr 7 Sat 1:00 PM Outdoor Fellowship Potluck (hosts: Health Ministry / Prayer Team)

Apr 8 Sun 10:00 AM Picnic & Mini-Train Ride — Hunter Park, Riverside

Apr 14 Sat 11:00 AM Women's Sabbath

February 2018

# COLTON SEVENTH-DAY ADVENTIST CHURCH NEWSLETTER

## Coming Up!

### Game Night



**Vespers, Food and Game Night** on TONIGHT beginning with vespers at 5:31 p.m. Bring your favorite games and potluck item and join the fun!



Next Sabbath, March 3, will be **Invite a Friend to Church Sabbath**.

It will be a time to celebrate friendship as well as introduce your friend to the Best Friend. It will be a special Sabbath beginning with a combined Bridge Sabbath School at 10:00 a.m. Pray about who the Lord would have you invite to church and then take courage and boldly ask leaving the results with your Ultimate Friend.



Volunteer at the **Helping Hands Pantry** warehouse on the first Sabbath of every month. March 3 at 2:30 p.m. is the next opportunity to serve our neighbors.



**Pro Musica**, the premiere choral ensemble at LLA, will be performing at our church on March 17. The chorus has several local concerts throughout the year, as well as regional, national and international performance opportunities while on tour. We are blessed to be a part of their concert line up this year. They have tremendous talent and a heart for the Lord.



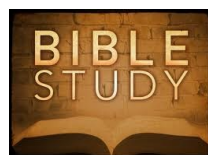
Bring your hard hat and a willing heart to the next **Super Work Bee** on March 18 at 8:00 a.m. Maintaining our facility is an act of worship! See Article on what a Super Work Bee means for you.



Calling all board members! **Board Meeting** Tuesday, March 20 at 7:00 p.m. "Where there is no guidance, a people falls, but in an abundance of counselors there is safety." Proverbs 11:14



Normally when we think of Easter baskets we think of eggs and bunnies because in our culture those are the images we see the most. But this year Community Services is changing that imagery. On March 29 **Food Baskets** will be prepared to hand out over **Easter Weekend**. What better way to remember the resurrection of Christ than helping the hungry and struggling? Let's be sure to support this mission project! See Blanca for more instructions and information.



The **Friday Night Bible Study & Dinner** begins at 6:30 p.m. every Friday evening this month. If you haven't attended yet you are not left behind! Attend when you can and you are sure to find a blessing! If you are wondering about this event contact Kristi or Rob.

## Elder's Retreat Report

What did the Elder's and their advisors do at Pine Springs Ranch? Was it just fun and games? A time for the church elite to exult in their status? As a first time elder let me assure you it was none of those!

The purpose of this event was to align our hearts with God's will and God's methods. Then we WORKED! Here's what we worked on:

### Priorities:

Pastor Choi began our weekend by listing his top three priorities for our church:

1. Abiding: Our congregation will be close to Jesus and His Word.
2. Loving: We will love each other.
3. Outreach: Our love of Jesus and each other will extend to outside our church

These priorities then were the catalyst of the rest of our planning time.

### Young adult/youth pastor:

At the board meeting in January Pastor Choi expressed a deep conviction that Colton church must have a dedicated pastor to reach young adults and youth. Without this commitment to young people our church can not grow and be the vibrant congregation God wants us to be. Our church has a strong, long-standing commitment to youth and young adults so it passed through the board with an air of expectancy. It was raised in the board that a clear job description was absolutely necessary as well as a clear picture of what type of individual characteristics were necessary for the position.

Thus one objective of one of our meetings was to brainstorm to create a job description and list of character traits we felt the youth pastor should have. Below is the list that was created as individuals voiced their opinions and ideas.

- ⇒ A love for young people
- ⇒ Commitment long term
- ⇒ Mentorship (older than 30 years)
- ⇒ Theology major either attained or working toward
- ⇒ Ability to be relevant
- ⇒ Responsible
- ⇒ Reliable

- ⇒ Available to teach Sabbath School
- ⇒ Willing and capable to collaborate with other ministries within the church
- ⇒ Bilingual would be preferred

With this list in mind our church is now actively seeking applicants through the Southeastern California Conference's job listings.

### Defining Colton:

What word or words define our Church? This was the next question to be delved into. Only when we know our strengths and weaknesses can growth occur. Again the floor was opened as delegates began to voice words and phrases they thought defined or described our church. Below are the positive responses:

- Melting pot
- Caring
- Family feel
- Idealistic (in a good way)
- Friendly
- Resourceful
- Work well together
- Take scripture seriously
- Balanced
- Accepting
- Safe place - refuge
- Feel restoration there

The areas which need improvement:

- Not enough emphasis on supporting families
- Too program oriented
- No growth/stagnant
- No direction

- Weak follow-up with people who have had contact with our church
- Over commitment leading to burn out
- Disorganization
- Lack of communication
- Run down and weird structure

Those negatives are no secret within our congregation and should be acknowledged. Now we can turn them into our goals.

Our goals are now to:

- ◇ Make our church a vibrant place for families (Part of why we need a Youth Pastor!)
- ◇ Think carefully about every program and put it in line with our priorities
- ◇ To strategize on how we can grow (Youth Pastor!)



Pastor Made sure we had a Sabbath afternoon walk to keep us from falling asleep after lunch!

- ◇ Find a direction (Pastor Choi will lead based on our new focus on our Priorities)
- ◇ Improve our communications within the Congregation and with our Visitors (Facebook, Photo directory, visitor cards with post card follow-up, increasing bulletin announcement and time frame in which they are listed as well as better communication during announcements and improving the website.
- ◇ Be careful of over commitment and burn out (again thinking of every activity we plan with our priorities in mind. If you haven't yet taken the commitment plunge maybe it is time.)
- ◇ Structure (The board and the Pastor have not forgotten our buildings current needs nor the dream of a new sanctuary. We must proceed with good information and a solid plan. Currently we need to focus on our current structure without losing our vision of the future.)

After long discussion of our church's characteristics we then revisited our Mission Statement. Much to our astonishment and joy our Mission Statement still describes our church! If you haven't read it lately pull out the bulletin or bring it up on the website. It is very well written and encompasses our strengths. There is only one problem with it. It is way too long to put on a mug or a flyer or a business card. Which lead to our next discussion. How to boil all that down to three words.

### **R3:**

We came to:

- \* Refuge. Our church is to be a place to find love and acceptance for any

person who is seeking God.

- \* Restore. Our church is to be a place to find solace from an unbelieving world. A place to find a renewal of faith to battle another week. A place to restore a relationship with Jesus if it has been lost or damaged by life's choices or storms
- \* Reach. Our church is to be reaching for those who need a refuge and long for restoration.

Yes, these are lofty words but with God's help and our willingness to follow Him we can attain them.

### **R3 Logo Contest:**

We would like to have a logo created with R3. It can be R3 or R<sup>3</sup> - that is R-cubed for those who are rusty on their arithmetic. It can have the words with it or not, it can have the name of the church or not. You

can see it is not limited except by your imagination, just remember it needs to be clear, recognizable and memorable. All submissions must be received by March 31 and can be turned into Pastor Choi, Kristi, or Nestor. Your Logo will appear on items used to represent the church there will be a cash reward as well!

It was a productive weekend but as you can see we left on Sunday with mush brains from all the brainstorming. However planning and strategizing is not the end. Now the work begins, a work we hope all of us will be apart of, including you. If you have any comments or ideas feel free to express them to Pastor Choi or any Elder or Advisor you feel comfortable talking with.

*Kristi Cruise*



Here is the group who attended in the room we met in, with the trusty white board which recorded all our lists.

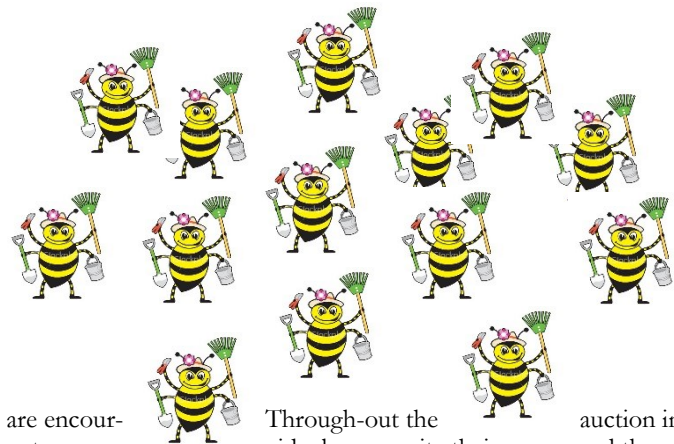


## Super Work Bee and Silent Auction

Turning This:



Into This:



Twice a year we will be having a Super Work Bee. During these work bees we will take on some of the larger projects the church needs to accomplish. Due to the size of some of these projects we need to increase the amount of workers. We ask you to put these work bees on your calendar and plan to attend.

The very first Super Work Bee will be on March 18 beginning at 8:00 a.m. and lasting until we clean out the Primary room. In an endeavor to remove clutter and cramped storage areas, we will be having a silent auction for all items the church no longer

needs. All ministries are encouraged to investigate your storage areas during the Super Work Bee for this auction. Each member may also bring items - in good working condition - to donate to the auction. Bring the item on the day of the Super Work Bee. All things not purchased at the auction or claimed by the original donor will be donated to another charitable organization or thrown out.

If you have never been to a silent auction here is how it works: Items will be placed on tables with a paper placed near them. On this paper will be the starting bid.

Through-out the auction individuals may write their names and the amount they are bidding, which always must be more than the prior bid, until the time for bidding is over. At the end of the auction the winner pays his/her bid and takes away his/her item. All money received will go to Local Church Budget.

Other projects may be announced as we near the actually date.

*Kristi Cruise*

## Communications Update

### Photo Directory Go Live:

You can now access the in-progress Photo Directory through the Instant Church Directory Website or App. Directions on how to access these points of entry are available in the foyer. In order for you to access them you must have a current e-mail on file within the church directory. This means that if you didn't supply a email when your picture was taken you will not be able to access the directory. See Kristi or Rob to update information. We will have another opportunity to take pictures in three months. In six months we may have a few printed versions available as well, but we urge you to use the electronic version as it will be the most current.

### Facebook Go Live:

Our church is now active on Facebook! If you have not already received notifications through Facebook from our church please notify Rob or Chuck as they are the ad-

ministrators of the site.

### R3 Logo:

Read the R3 logo contest above! It is vital for our church to have a clear, recognizable and memorable logo. Too often we shy away from promoting and marketing in church settings. This should not be! If ever an organization had a message to promote and market we do! We are not trying to increase our personal gain, but instead we desire to lead the lost to salvation and the joy Jesus provides both now and for eternity.

### Future Projects:

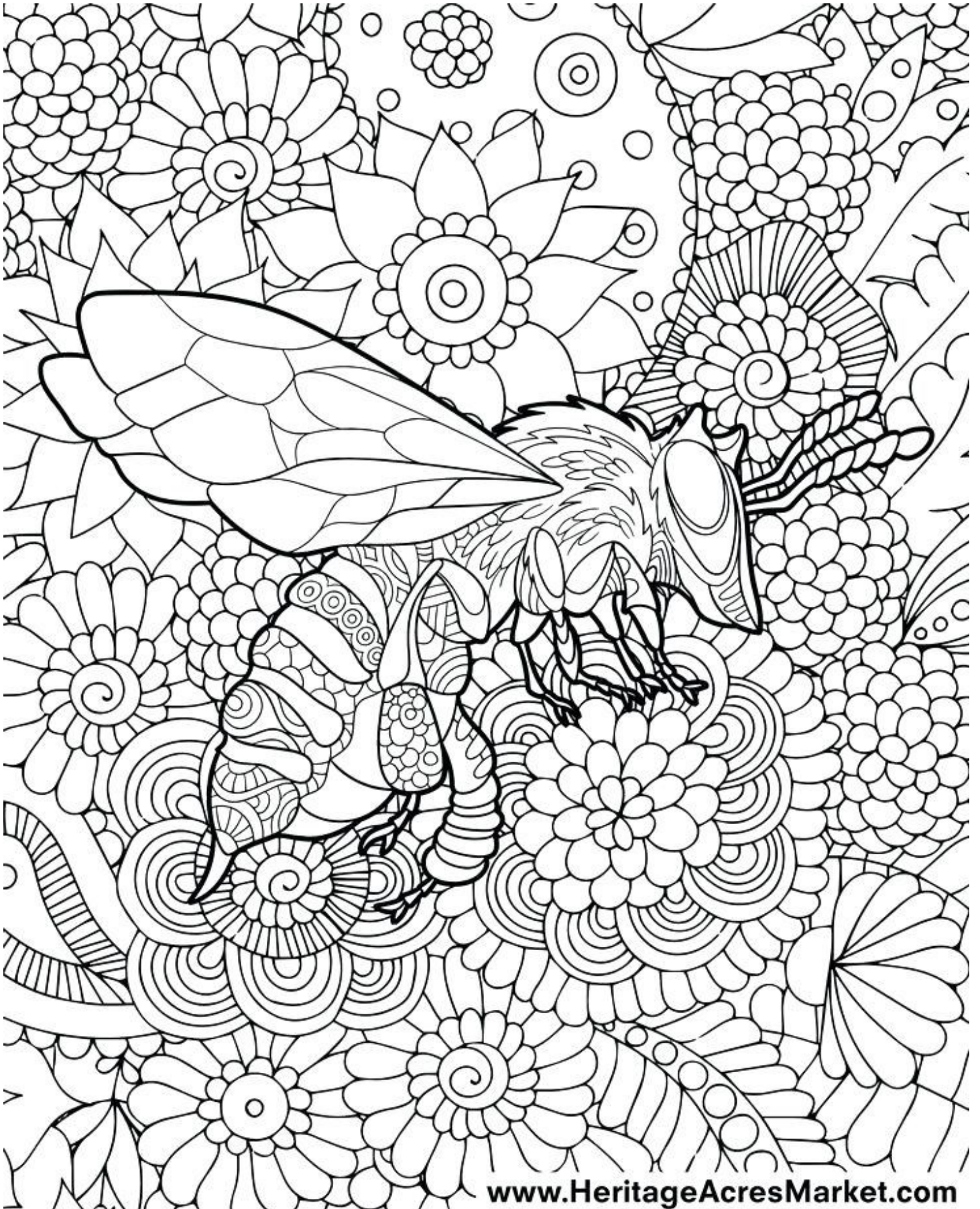
With our greeters we are endeavoring to provide better follow-up with our visitors. Soon we will begin to use welcome visitors card in which there will be space to provide their contact information. This contact information will be used to, in the very least, send a postcard or email thanking them for visiting our church.

We also plan to continue to upgrade our website to be the place to easily see upcoming events. If you have not yet visited the website please do so at [www.colton.adventistfaith.org](http://www.colton.adventistfaith.org).

### What You Can Do:

Read the bulletin and the newsletter, visited the web site, participate in the photo directory, tell others about events and create a logo. Let us know how we can help your ministry to communicate.

*Kristi Cruise*





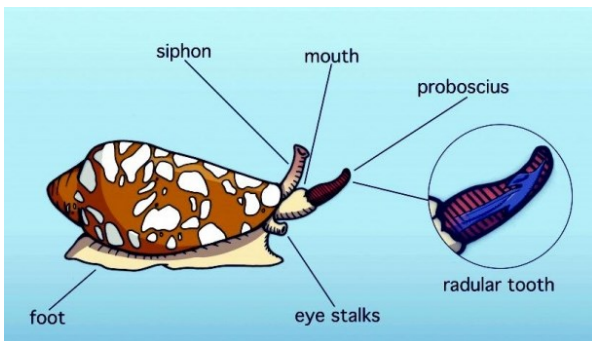
Colton Seventh-day  
Adventist Church

Mailing Address  
880 W. Laurel Street  
Colton, CA 92324

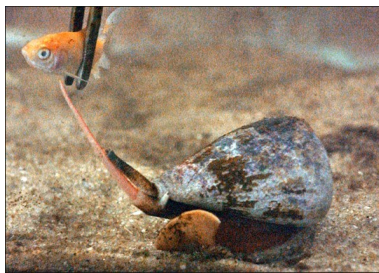
Phone: 909-825-9344

We're on the Web!  
colton.adventistfaith.org

## My Father's Amazing World - Venom Part 8



Home to southeast Asia cone snails totally break the stereotypes for snails. And not just because their shells are amazingly beautiful. The cone snail is arguably the most venomous creature in the world. It has an amazing array of venom. They can combine the different types of venom depending on what it is trying to catch. That's right this is no vegetarian. It



doesn't even wait for its prey it actively hunts using some sight but mostly smell to track and prepare its weapons. When they smell a meal they carefully extend their proboscis which contains a harpoon full of venom. It then shoots the fish with the radular tooth aka harpoon into a suspecting fish and then reels the fish directly into its stomach. Since cone snails are slow moving their venom has to act quickly or the fish will fight and break the line of the harpoon. Without this tremendously powerful system a cone snail would never get a meal. Unfortunately, the venom works really well on humans as well resulting in death the most venomous will kill you in less time than it would take to get to a hospital. The most common victims are shell



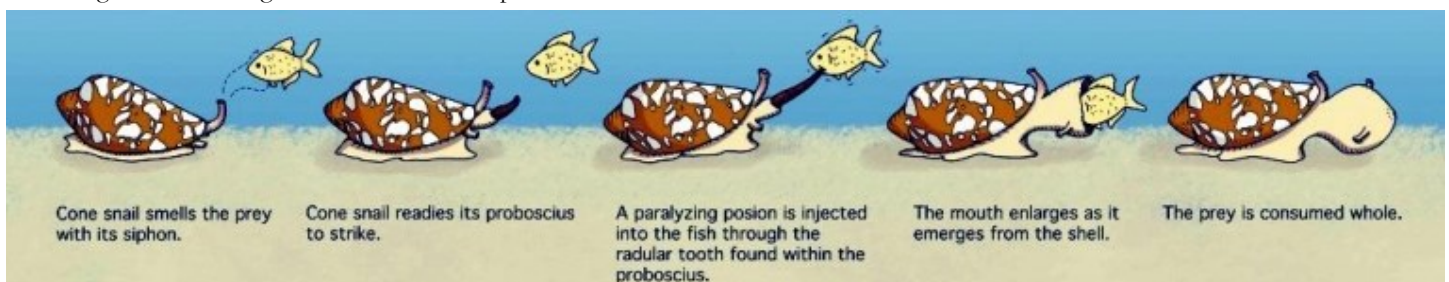
collectors. Some day I'm going to play with these in heaven along with all the other venomous creatures God never intended to be harmful.

Currently, however, scientists are actively working with the cone snail venom to create medicines to help with cancer and pain. So although these snails can kill they may someday heal.

*Kristi Cruise with Gigi and JayJay Cruise*

<https://www.sciencefriday.com/segments/killer-cone-snails-for-your-health/>

[video.nationalgeographic.com/video/weirdest-cone-snail](https://video.nationalgeographic.com/video/weirdest-cone-snail)



## Distribution Dates

The Newsletter will be published on the dates below.

March 24

If you would like to contribute please submit at least 7 days in advance of distribution date. Please send via e-mail at [jrklijcruise@sbcglobal.net](mailto:jrklijcruise@sbcglobal.net).